



RESIDENTIAL LED LIGHTING



EVERLÜME™
LED LIGHTING

EVERLUME™

LED LIGHTING



Residential LED Lighting

Everlume LED Lighting

With the Progress Everlume LED collection, it's possible to illuminate any space in your home by choosing from a complete selection of fixtures, all of which feature bright and efficient LED lighting. The latest technology is applied to make options in the EVERLUME LED line – pendants, chandeliers, recessed lighting, step lights, cove lighting and outdoor lighting – an innovative alternative to traditional lighting solutions. Because LED technology represents the future of decorative lighting, Progress Lighting is pleased to announce more luminaires have been added to the collections and can be found in the following pages.



Green Friendly

Create a comfortable, inviting experience in your home while finding solace in the fact that you also are being kinder to the environment. When you choose to light rooms, foyers, paths and landscapes with EVERLUME, you can expect more than energy-saving benefits. Here are a few more reasons to consider switching to LED lighting.

Energy Efficient

LED options use two to five times less power than similar incandescent sources.

Long Life

With normal home usage, illumination lasts more than 40,000 hours, or more than 20 years.

Warm White Color

EVERLUME fixtures feature high-brightness warm white LED technology, resembling incandescent and halogen lamp sources.

Dimmable

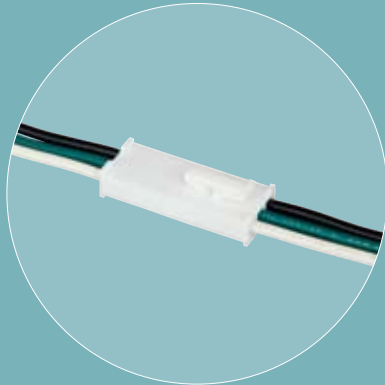
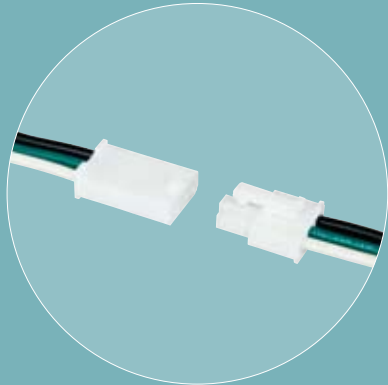
Most EVERLUME LED products are compatible with electronic low voltage dimmers to dim the light output. Consult factory for details.

Cool Operation

LED sources are cool-to-the-touch because they radiate a low amount of heat. This means you can experience increased safety over similar incandescent fixtures. Additionally, the low heat decreases burdening air conditioning bills.

LED Recessed | Trims for New Construction

Quick-Link



Quick-Link Housings

4" and 6" Standard Can Designs

- Includes Quick-Link socket for mounting to Quick-Link LED trims
- California Title 24 compliant
- Includes no screw-base socket components
- Meets state guidelines for Air-Tight, IC fixtures

4" LED Recessed



P830-ATQL

4" Recessed New Construction Housing
Dimensions: 7-7/8" x 10-3/4"
Ceiling opening: 4-1/2" dia.
Plaster Frame: 7-7/8" x 10-3/4"
Recessed depth: 5-1/2"
Pryouts: 1/2" and 3/4"

P8027-30QL



P8027-30QL/27K (Includes mounting clip to mount to P830-ATQL can) 4" trim, White, 2700K color temp: Dimensions; 1-7/8" ht., 5" outside dia., 5w. Also compatible with LED recessed retrofit trims.

P8027-30QL/35K (Includes mounting clip to mount to P830-ATQL can) 4" trim, White, 3500K color temp: Dimensions; 1-7/8" ht., 5" outside dia., 5w. Also compatible with LED recessed retrofit trims.

P8029-30QL



P8029-30QL/27K (Includes mounting clip to mount to P830-ATQL can) 4" trim, White, 2700K color temp: Dimensions; 2-1/8" ht., 5" outside dia., 5w. Also compatible with LED recessed retrofit trims.

P8029-30QL/35K (Includes mounting clip to mount to P830-ATQL can) 4" trim, White, 3500K color temp: Dimensions; 2-1/8" ht., 5" outside dia., 5w. Also compatible with LED recessed retrofit trims.

Trims for New Construction

These recessed trims are one simple unit and work with standard 6" and 4" can designs. The state-of-the-art trims combine with high-brightness warm white LED sources and an integral power source to offer wide distribution patterns for general and functional illumination. Refer to part number and description for color temperature and wattage. CRI = 76.

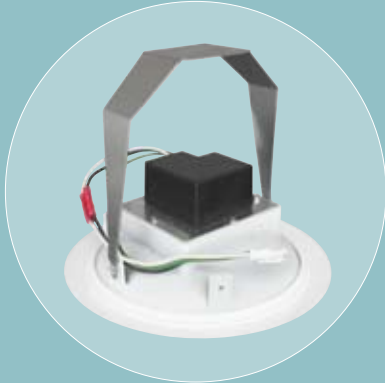
Quick-Link

4" and 6" recessed LED Tilting Adjustable Trim for Aiming

Quick-Link attachment makes California Title 24 compliance connections easy, as it contains no screw-in base socket components.

Includes LED's, integral dimmable power source and frosted lens that provides 120 Degree beam pattern.

6" LED Recessed



TRIM-LOK® RETENTION BRACKET
forces trim to fit snug against the ceiling

P8059-30QL



P8059-30QL/27K (mount to P87-ATQL can)
6" trim, White, 2700K color temp:
Dimensions; 6ht., 7-3/4" outside dia.,
consumes less than 14w. Includes 3-prong
Quick-Link base for attachment to housing.

P8059-30QL/35K (mount to P87-ATQL can)
6" trim, White, 3500K color temp:
Dimensions; 6ht., 7-3/4" outside dia.,
consumes less than 14w. Includes 3-prong
Quick-Link base for attachment to housing.

P8058-30QL



P8058-30QL/27K (mount to P87-ATQL can)
6" trim, White, 2700K color temp:
Dimensions; 6" ht., 7-3/4" outside dia.,
consumes less than 14w. Includes 3-prong
Quick-Link base for attachment to housing.

P8058-30QL/35K (mount to P87-ATQL can)
6" trim, White, 3500K color temp:
Dimensions; 6" ht., 7-3/4" outside dia.,
consumes less than 14w. Includes 3-prong
Quick-Link base for attachment to housing.



P87-ATQL

P87-ATQL

6" Recessed New Construction Housing
Integral Nail in bar hanger
Dimensions:
Ceiling opening: 6-7/8" dia.
Plaster frame: 7-7/8" x 10-3/4"
Recessed depth: 7-1/2"
Pryouts: 1/2" and 3/4"

Note: Refer to product number for color temperature

Lumen Output: For 4" trims, lumen output is comparable to 5w CFL and 25w incandescent lamps. For 6" trims, lumen output is comparable to 18w CFL and 50-60w incandescent lamps.

LED Recessed | Retrofit trims

4" LED Trims for Progress P830/P831/P832



4" Recessed LED Tilting Adjustable Trim for Aiming

P8027-30



P8027-30 4" trim, White, 2700K color temp: Dimensions; 1-7/8" ht., 5" outside dia., 5w. Also compatible with LED recessed retrofit trims.

P8027-30/35K 4" trim, White, 3500K color temp: Dimensions; 1-7/8" ht., 5" outside dia., 5w. Also compatible with LED recessed retrofit trims.

4" Recessed LED Smooth Open Trim

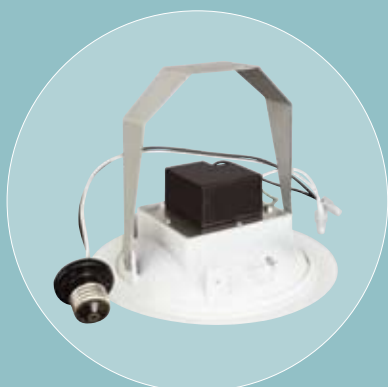
P8029-30



P8029-30 4" trim White, 2700K color temp: Dimensions; 2-1/8"ht., 5" outside dia., 5w. Also compatible with LED recessed retrofit trims.

P8029-30/35K 4" trim, White, 3500K color temp: Dimensions; 2-1/8"ht., 5" outside dia., 5w. Also compatible with LED recessed retrofit trims.

6" LED Trims for Progress P87/P187



TRIM-LOK® RETENTION BRACKET
forces trim to fit snug against the ceiling

6" Recessed LED Tilting Adjustable Trim for Aiming

P8059-30



P8059-30 6" trim, White, 2700K color temp: Dimensions; 6"ht., 7-3/4"outside dia., consumes less than14w.

P8059-30/35K 6" trim, White, 3500K color temp: Dimensions; 6"ht., 7-3/4"outside dia., consumes less than14w.

6" Recessed LED Smooth Open Trim

P8058-30



P8058-30 6" trim, White, 2700K color temp: Dimensions; 6" ht., 7-3/4"outside dia., consumes less than14w.

P8058-30/35K White, 3500K color temp: Dimensions; 6" ht., 7-3/4"outside dia., consumes less than14w.

4" and 6" Recessed Trims for New Construction Standard Progress Recessed Housing

Includes LEDs, integral dimmable power source and frosted lens that provides 120 Degree beam pattern. Refer to part number and description for color temperature and wattage. Lumen Output for 4" trims is comparable to 5w CFL and 25w incandescent lamps and 6" trims are comparable to 18w CFL and 50-60w incandescent lamps.

4" trims can be used as new construction and also are compatible with LED recessed retrofit housings. 6" trims require the use of P87/P187 series recessed housing. Other available recessed housings for use with LED trims:

4": P831-AT, P830-TG, P832-TG

6": P87-AT, P87-ATQC, P187-TG

6" LED Recessed Retrofit Trims



6" LED Recessed Retrofit Smooth Open Trim

P8069-30*



P8069-30 White, 2700K color temp, **CONSUMES** less than 14w: Dimensions; 3" ht., 7-3/4" outside dia.

P8069-30/35K White, 3500K color temp, consumes less than 14w: Dimensions; 3" ht., 7-3/4" outside dia.

6" LED Recessed Retrofit Tilting Adjustable Trim for Aiming

P8070-30*



P8070-30 White, 2700K color temp, **CONSUMES** less than 14w: Dimensions; 2" ht., 7-3/4" outside dia.

P8070-30/35K White, 3500K color temp, consumes less than 14w: Dimensions; 2" ht., 7-3/4" outside dia.

Other available recessed housings for use with LED trims: P87-AT, P187-AT, P87-ATQC

6" Retrofit Trims

These trims are designed and UL Classified to mount into existing standard 6" recessed housings including products by Capri®, Commercial Electric®, Emerald®, Halo®, Intense®, Juno®, Lithonia®, Nora®, WAC® and others (see factory for details on compatibility with other housings).

Beam spread: 120 Degrees
CRI: 76.

Screw-in medium base for attachment to standard medium base INC socket.

Includes LEDs, integral dimmable power source and frosted lens that provides 120 Degree beam pattern. Refer to part number and description for color temperature and wattage. Lumen output for 6" trims is comparable to 18w CFL and 50-60w incandescent lamps.

LED Decorative Chandeliers & Pendants

P4420-09

Modern styling with state of the art LED technology

Brushed Nickel finish

Frosted glass

P5022-09



P7101-09

Decorative Lighting

Modern decorative styling combines with state-of-the-art LED technology to create the award-winning Copenhagen and Starlite series. Recognized for its innovation in the industry, these collections represent the latest in aesthetically-pleasing fixtures, while offering energy-efficient benefits. Dimmable with 3-wire electronic low voltage dimmers and featuring warm white brightness, these products are the future for decorative lighting.

Starlite LED

5-LIGHT CHANDELIER

P4420-09* Brushed Nickel
Size: 27" dia., 17-1/4" ht.,
Overall ht. w/chain 73"; wire 15'.
Lamps: Five 3w LED (incl)
w/frosted LED lamp shrouds.
3500K, CRI: 76.

PENDANT

P5022-09* Brushed Nickel
Includes two 12" and two 15"
stems with 90° hang straight.
Size: 7-3/4" dia., 5-1/4" ht.
Overall ht. w/stem 61" wire 10'.
Lamps: One 3w LED (incl)
w/frosted LED lamp shrouds.
3500K, CRI: 76.



*Includes integral dimmable power sources. Use with 3-wire electronic low voltage dimmer switches.

Copenhagen LED

WALL BRACKET

P7101-09* Brushed Nickel
One-light.
Size: 7-3/4" W. 11-3/4" ht.
H/TCR 9". Extends 10".
Lamps: Three 3w LED (incl)
w/frosted LED lamp shrouds.
3500K, CRI: 76.

4-LIGHT CHANDELIER

P4430-09* Brushed Nickel
P4430-20* Antique Bronze
Size: 22" dia., 19" ht., Overall ht.
w/chain 94"; wire 15".
Lamps: Four 3w LED (incl)
w/frosted LED lamp shrouds.
3500K, CRI: 76.

MINI-PENDANT

P5031-09* Brushed Nickel
P5031-20* Antique Bronze
Includes two 12" and two 15"
stems with 90° hang straight.
Size: 6" dia., 5-1/8" ht. Overall
ht. w/stem 59" wire 10".
Lamps: One 3w LED (incl)
w/frosted LED lamp shrouds.
3500K, CRI: 76.

LED Mini-Pendants



Mini-Pendants

Ideal for mounting in intimate areas over breakfast bars, kitchen counters, desks, and breakfast nooks, the LED glass mini-pendants are perfect for adding beauty and illumination to any space. Available in a variety of colors and shapes, LED mini-pendants provide elegant customized accent and task lighting.

Consuming only 3w of total power per fixture, while providing more than 40 lumens per watt of illumination, these mini-pendants are for kitchen areas that require high-efficiency low

wattage fixtures. In addition to low power consumption, the LED mini-pendants contain an integral transformer that allows the fixtures to be wired directly to standard line voltage and dimmed with a 3-wire electronic low voltage dimmer switch. The pleasing warm white (2700K) appearance provides illumination identical to similar incandescent products while maintaining the long life benefits of LED sources (over 30,000 hrs). The LED Modules and Power units are interchangeable and replaceable.

P5149-20T



Medium bell
flair shape

P5151-20SW



Conical shape

P5151-09SW



MINI-PENDANT

P5148-09B Brushed Nickel with blue glass

P5148-09W Brushed Nickel with white glass

Size: 4-1/8" dia., 7-1/2" ht.;
Overall ht. w/cord 129"; wire 10'.
Lamp: One 3w LED, included.

MINI-PENDANT

P5149-20T Antique Bronze Topaz glass.

Size: 5-3/8" dia., 7" ht.;
Overall ht. w/cord 128"; wire 10'.
Lamp: One 3w LED, included.

MINI-PENDANT

P5151-09SW Brushed Nickel Swirled glass.

P5151-20SW Antique Bronze Swirled glass.
Size: 6-5/8" dia., 7" ht.;
Overall ht. w/cord 128"; wire 10'.
Lamp: One 3w LED, included.

Warm white 2700K LED's included, total of 3W consumed per fixture. Integral dimmable transformer, standard 72" of cable. Wattage: 3w
Lumen Output : comparable to 5w CFL and 25w INC
Color temperature: 2700K
Beam Spread: 120 Degrees
CRI: 76

LED Mini-Pendants



Mini-Pendants

MINI-PENDANT

P5154-09A Brushed Nickel
P5154-20A Antique Bronze
Amber glass.
Size: 6-3/4" dia., 6-1/2" ht.;
Overall ht. w/cord 128"; wire 10'.
Lamp: One 3w LED, included.

MINI-PENDANT

P5150-09PT Brushed Nickel
with topaz tortoise glass
P5150-20PR Antique Bronze
with red patterned glass
P5150-20PT Brushed Nickel
with topaz tortoise glass
Size: 4-1/2" dia., 7-1/2" ht.;
Overall ht. w/cord 130"; wire 10'.
Lamp: One 3w LED, included.

White 2700K LED's included,
total of 3w consumed per fixture.
Integral dimmable transformer,
standard 72" of cable.
Wattage: 3w
Lumen Output: comparable to
5w CFL and 25w INC
Color temperature: 2700K
Beam Spread: 120 Degrees
CRI: 76



P5150-09PT



P5150-20PT



Narrow bell shape

P5150-20PR



LED Cove Lighting

Three Main Components of this Cove Lighting System



P7513-30

1. Track

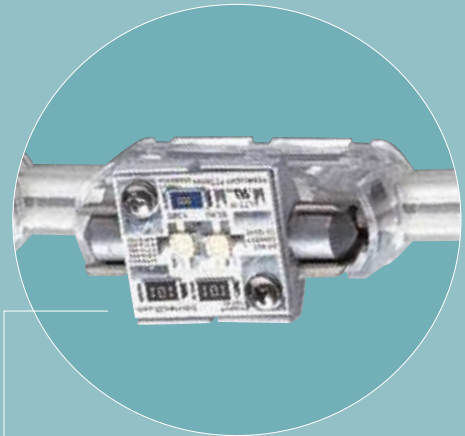
Desired section of cove lighting track – This flexible track section is available in four lengths that can be field cut or electrically linked to additional sections of track in the field. The track contains sockets that can accept up to 5 P7814-30 LED Lamps (ordered separately) per linear foot of track.



P7814-30

2. Lamp Modules

LED Lamp Modules – The **P7814-30** LED lamp modules are in standard 5-pack configurations and insert into the flexible cove lighting track sections. The lamp modules consume less than 1.5w of power each and can be placed in each socket of the track section, or placed in customized intervals of sockets as desired (each socket does not require a lamp for the system to operate properly).



Detail of LED lamp module

P8674-01



P8675-01

3. Transformer

The transformer models **P8674-01** and **P8675-01** are available for use with the Progress LED cove lighting system. **P8674-01** is a 60w max version that can NOT be dimmed, and **P8675-01** is a 250w max transformer that can be dimmed with a 3-wire electronic low voltage dimmer. **P8675-01** has four separate 60w circuits.

- P7513-30** 2 feet of LED Cove lighting track
P7514-30 4 feet of LED Cove lighting track
P7515-30 8 feet of LED Cove lighting track
P7516-30 12 feet of LED Cove lighting track
Section of flexible cove lighting track, accepts 5 LED lamps per linear foot, can be cut to length in field or electrically joined to another section of track.
Dimensions: 3/4" Width, Length – determined by part number

- P7814-30** LED Cove Lighting Lamp Module
Standard 5-pack LED lamp modules, 5 per pack, less than 1.5w per lamp module, 2750K warm white
Dimensions: 1-3/4"L, 1/2"H, 1"W

- P8674-01** 60w LED Transformer
P8675-01 250w Dimmable LED Transformer
These LED power supplies run in constant voltage mode, meaning there is little to no expertise required to connect them. Simply hardwire attach to the AC power source and the other to the 12Vdc LED modules. Both products come standard with a primary side wiring junction box eliminating the need for additional boxes or enclosures. P8675-01 is dimmable with a standard transformer, P8674-01 requires an electronic low voltage dimmer.
P8674-01 Dimensions: 5-1/4"W., 3-1/2"ht.
P8675-01 Dimensions: 5-1/4"W., 3-1/2"ht.



Cove area to be illuminated	Products required	Quantity	Description
12'	P7516-30	1	12' Section of flexible cove lighting track, accepts 5 LED lamps per linear foot, can be cut to length in field or electrically joined to another section of track
	P7814-30	12	LED lamp modules, 5 per pack, less than 1.5w per lamp, 2700K warm white
	P8674-01	1	60w Transformer, non-dimmable [Note, for dimming use P8675-01]
8'	P7515-30	1	8' Section of flexible cove lighting track, accepts 5 LED lamps per linear foot, can be cut to length in field or electrically joined to another section of track
	P7814-30	8	LED lamp modules, 5 per pack, less than 1.5w per lamp, 2700K warm white
	P8674-01	1	60w Transformer, non-dimmable [Note, for dimming use P8675-01]
4'	P7514-30	1	4' Section of flexible cove lighting track, accepts 5 LED lamps per linear foot, can be cut to length in field or electrically joined to another section of track
	P7814-30	4	LED lamp modules, 5 per pack, less than 1.5w per lamp, 2700K warm white
	P8674-01	1	60w Transformer, non-dimmable [Note, for dimming use P8675-01]
2'	P7513-30	1	2' Section of flexible cove lighting track, accepts 5 LED lamps per linear foot, can be cut to length in field or electrically joined to another section of track
	P7814-30	2	LED lamp modules, 5 per pack, less than 1.5w per lamp, 2700K warm white
	P8674-01	1	60w Transformer, non-dimmable [Note, for dimming use P8675-01]

Cove Lighting

Generally used to direct light upward, Cove lighting creates an enhanced dramatic feel to any room by providing soft indirect lighting. This soft indirect illumination enhances the feel of any space by providing an additional layer of light to the illumination scheme and providing a sense of increased height and openness to the space. The typical applications for cove lighting fixtures are ledges, valences, or horizontal recessed areas on an upper wall or ceiling of a space.

Outdoor LED



P5548-09

Modern Craftsman styling

Etched glass

Brushed Nickel finish



P5868-09

Outdoor Lighting

Progress Lighting brings the benefits of LED lighting to your front door with these award-winning new collections of outdoor lighting fixtures. Available in wall mount, post-top, and chain-hung, these decorative outdoor fixtures beautify and illuminate the outdoors with efficient 3500K LED technology.

Lakeland LED

The Lakeland Series features modern Craftsman styling with etched glass. LED's mounted to the inside top housing, and covered in a protective clear shroud provide a beautiful soft glow of illumination with no visible lamps or glare.



P5879-09

No visible lamps
or glare



P5809-09

Halogen white,
3000K color temp.
CRI: 76



P5497-09

Product No.	Finish	Description	Size	Lamp(s)
P5497-09	Brushed Nickel	Post lantern.	9-3/4" dia., 17-3/4" ht. Fits 3" post	<14w LED included
P5548-09	Brushed Nickel	Hanging lantern	9-11/16" W., 13-7/8" ht. Overall ht. w/ chain 87"	<14w LED included
P5809-09	Brushed Nickel	Wall lantern.	5-7/8" W., 6-3/4" ht. Extends 7-3/4", H/CTR 2-3/8".	<5w LED included
P5868-09	Brushed Nickel	Wall lantern.	8-1/4" W., 10" ht. Extends 10-1/2", H/CTR 4".	<5w LED included
P5879-09	Brushed Nickel	Wall lantern.	9-3/4" W., 11-1/2" ht. Extends 12-1/4".	<14w LED included

Outdoor LED



P5509-20

Antique Bronze finish

Warm white light
3500K color temp.
CRI: 76

Etched water seeded glass



P5908-20



P5909-20



P5409-20

Greenridge LED

Product No.	Finish	Description	Size	Lamp(s)
P5409-20	Antique Bronze	Post lantern	7-1/2" sq., 14-1/2" ht. Fits 3" post (order separately, pg. 646).	<14w LED included
P5509-20 (additional chain available, pg. 308).	Antique Bronze	Hanging Lantern	7-1/2" sq., 12-3/8" ht. Overall ht. w/ chain 87"; wire 15' included	<5w LED
P5908-20	Antique Bronze	Wall lantern	6" W., 9-5/8" ht. Extends 6-5/8", H/CTR 2-1/2"	<5w LED included
P5909-20	Antique Bronze	Wall Lantern	7-1/2" W., 11" ht. Extends 8-1/2", H/CTR 4-1/2".	<5w LED included

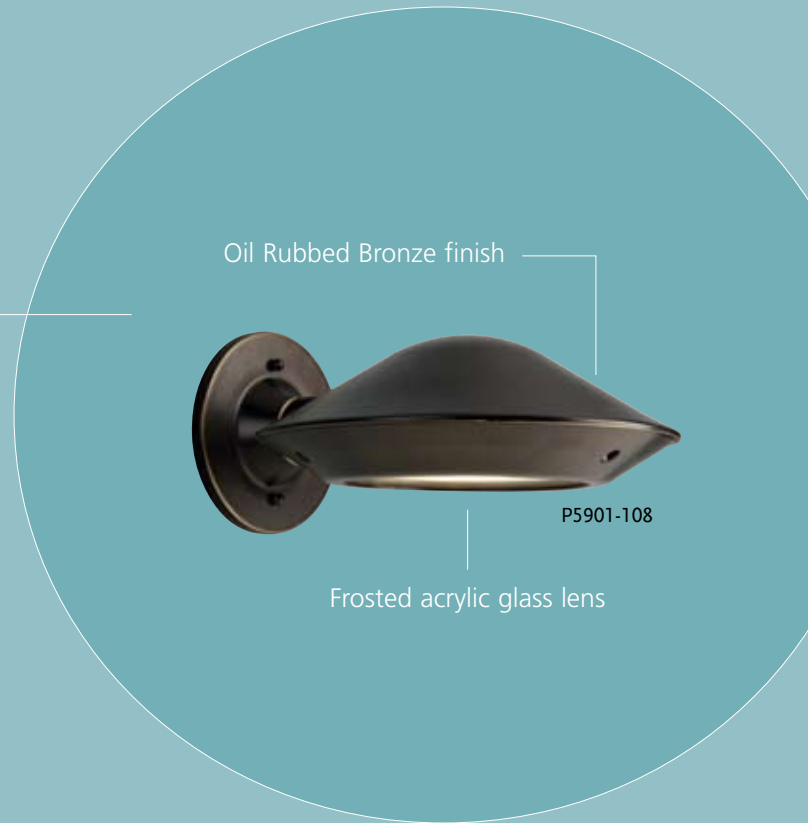


P5885-108

Projects light downwards – glare-free and dark-sky friendly
CRI: 76



P5900-108



Oil Rubbed Bronze finish

P5901-108

Frosted acrylic glass lens



Strata LED

The Strata series of fixtures was designed to take full advantage of the small size and directionality of the LED sources. Featuring a low-profile modern housing design, the Strata fixtures project light only downwards for glare-free dark-sky friendly illumination. The thin fixture design is also ideal for mounting over address lights or doorways.

Product No.	Finish	Description	Size	Lamp(s)
P5885-108	Oil Rubbed Bronze	Small Lantern lens	6-1/2" W., 5-1/2" ht., Extends 8-1/8", H/CTR 2-3/4".	<5w LED included
P5900-108	Oil Rubbed Bronze	Medium Lantern lens	8-1/4" W., 5-1/2" ht., Extends 9-3/4", H/CTR 2-3/4".	<5w LED included
P5901-108	Oil Rubbed Bronze	Large Lantern lens	10-5/8" W., 5-1/2" ht., Extends 12-1/8", H/CTR 2-3/4".	<14w LED included

LED Step / Wall Lights



For indoor and outdoor use

Brushed Nickel finish

P6828-09



P6828-09 Brushed Nickel
P6828-30 White
Mini vertical step/ wall light.
Dimensions: 3-1/2"W., 5-1/4"ht.

P6828-30



Wattage: <5w
Lumen Output: Comparable to 5w CFL and 25w incandescent
Color temperature: 3000K
Beam Spread: 120 Degrees
CRI: 76

P6827-09

Contains integral dimmable power

P6827-09 Brushed Nickel
P6827-30 White
Mini horizontal step/ wall light.
Requires horizontally-oriented wallbox.
Dimensions: 5-1/4"W., 3-1/2"ht.

Wattage: <5w
Lumen Output: Comparable to a 5w CFL and 25w incandescent
Color temperature: 2700K
Beam Spread: 120 Degrees
CRI: 76

Step and Wall Lights

P6829 LED step/wall lights provide an attractive solution for a variety of illumination tasks. UL wet location listed for outdoor as well as indoor applications. The products contain an integral dimmable power module in a compact package, and consume less than 5w of power per fixture. Warm white 2700K LED's included.

P6827 and P6828 LED step/wall lights are available in a vertical or horizontal configuration for mounting into a single-gang wallbox. These products contain an integral dimmable power module in a compact package, and consume less than 5w of power per fixture. Warm white 2700K LED's included.

P6829-20



P6829-30



P6829-31



Warm white 2700K
LED's included

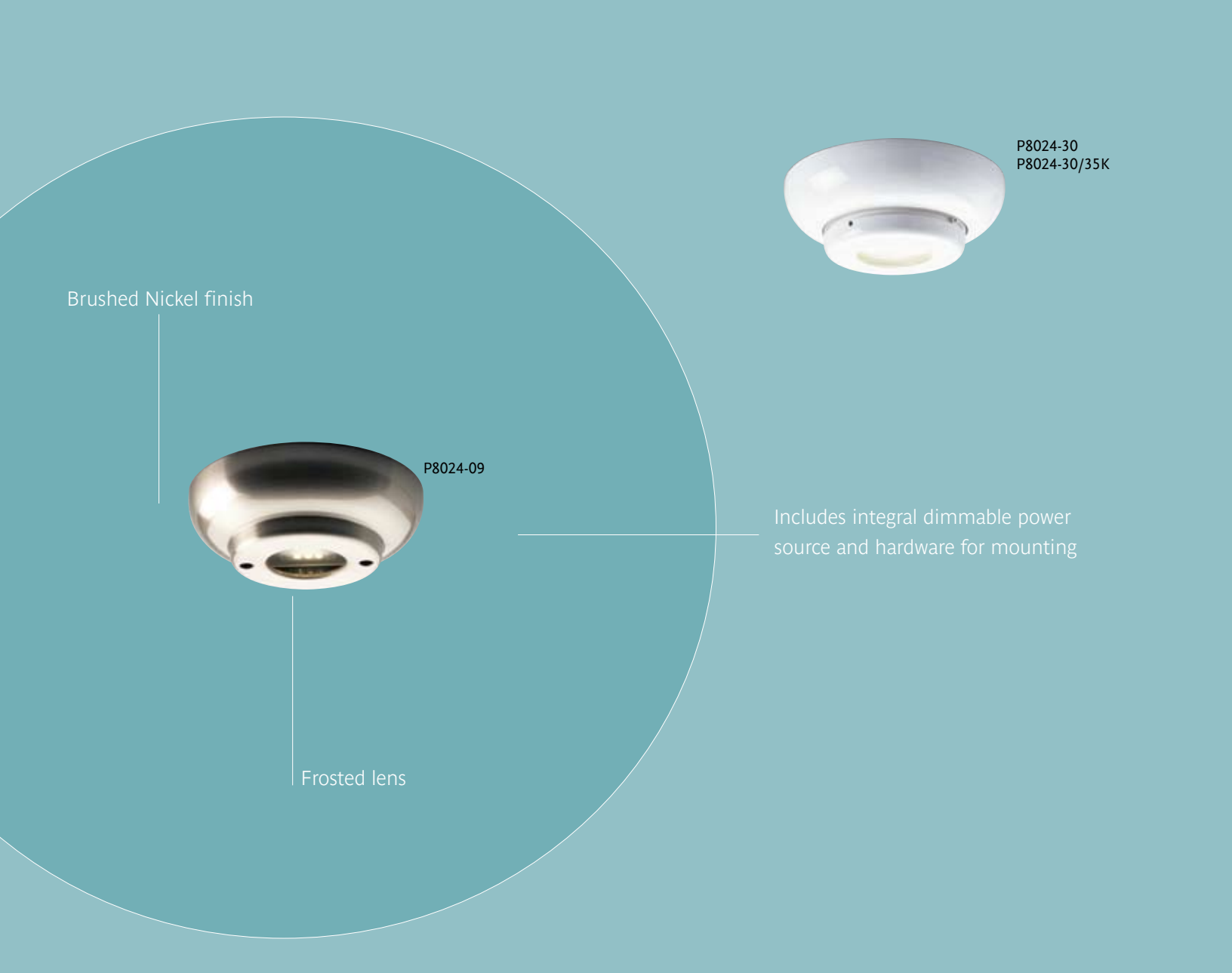


P6829-09

P6829-09 Brushed Nickel
P6829-20 Antique Bronze
P6829-30 White
P6829-31 Black
 Mini decorative vertical
 step/ wall light.
 Wet location listed.
 Dimensions: 2-7/8"W., 4-1/2"ht.

Lamp: LED <5w
 Lumen Output:
 comparable 5w CFL and 25w INC
 Color temperature: 2700K
 Beam Spread: 120 Degrees
 CRI: 76

LED Ceiling Mount and Close-to-Ceiling



Brushed Nickel finish

P8024-09

Frosted lens

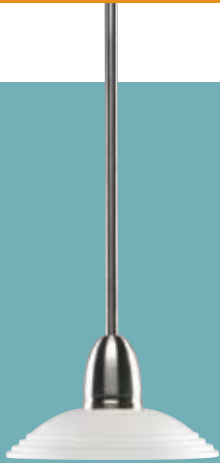
P8024-30
P8024-30/35K

Includes integral dimmable power source and hardware for mounting

6" Recessed LED Surface-Mount Fixture

These fixtures are designed to mount to a standard ceiling junction box and offer high brightness for general illumination, especially for lower ceilings. Close-to-Ceiling options can aid in the lighting design without taking away from the focal points that make a certain room unique. Refer to part number and description for color temperature.

Product No.	Finish	Description	Size	Lamp
P8024-09/35K	Brushed Nickel	3500k color temp	2-3/8"ht., 7" outside dia.	<14w LED CRI:76 530 Lumens (included)
P8024-30/35K	White	3500k color temp	2-3/8"ht., 7" outside dia.	<14w LED CRI:76 530 Lumens (included)
P8024-30	White	2700k color temp	2-3/8"ht., 7" outside dia.	<14w LED CRI:76 480 Lumens (included)



P100

- P87.....3
- P830.....2

P4000

- P4420.....6
- P4430.....7

P5000

- P5022.....6
- P5031.....7
- P5148.....9
- P5149.....9
- P5150.....10
- P5151.....9
- P5154.....10
- P5409.....16



- P5497.....15
- P5509.....16
- P5548.....15
- P5809.....15
- P5868.....15
- P5879.....15
- P5885.....17
- P5900.....17
- P5901.....17
- P5908.....16
- P5909.....16

P6000

- P6827.....18
- P6828.....18
- P6829.....19



P7000

- P7101.....7
- P7514.....12
- P7515.....12
- P7516.....12
- P7814.....12

P8000

- P8027.....2, 4
- P8029.....2, 4
- P8058.....3, 4
- P8059.....3, 4
- P8069.....5
- P8070.....5
- P8674.....12
- P8675.....12



Note

All values published in this catalog for lumen output, beam spreads, color temperature, color rendergin, wattages, and coparisons are approximations based on the current LED technology used in the fixtures. LED technology is rapidly changing and many of the product's performance parameters will change with advancing technology. Please consult factory for the latest performance specifications.



701 Millennium Blvd.
Greenville, South Carolina
29607

www.progresslighting.com



Hubbell Lighting, Inc.

REV 1/08

PL005

EVERLŪME™
LED LIGHTING

www.everlumelighting.com